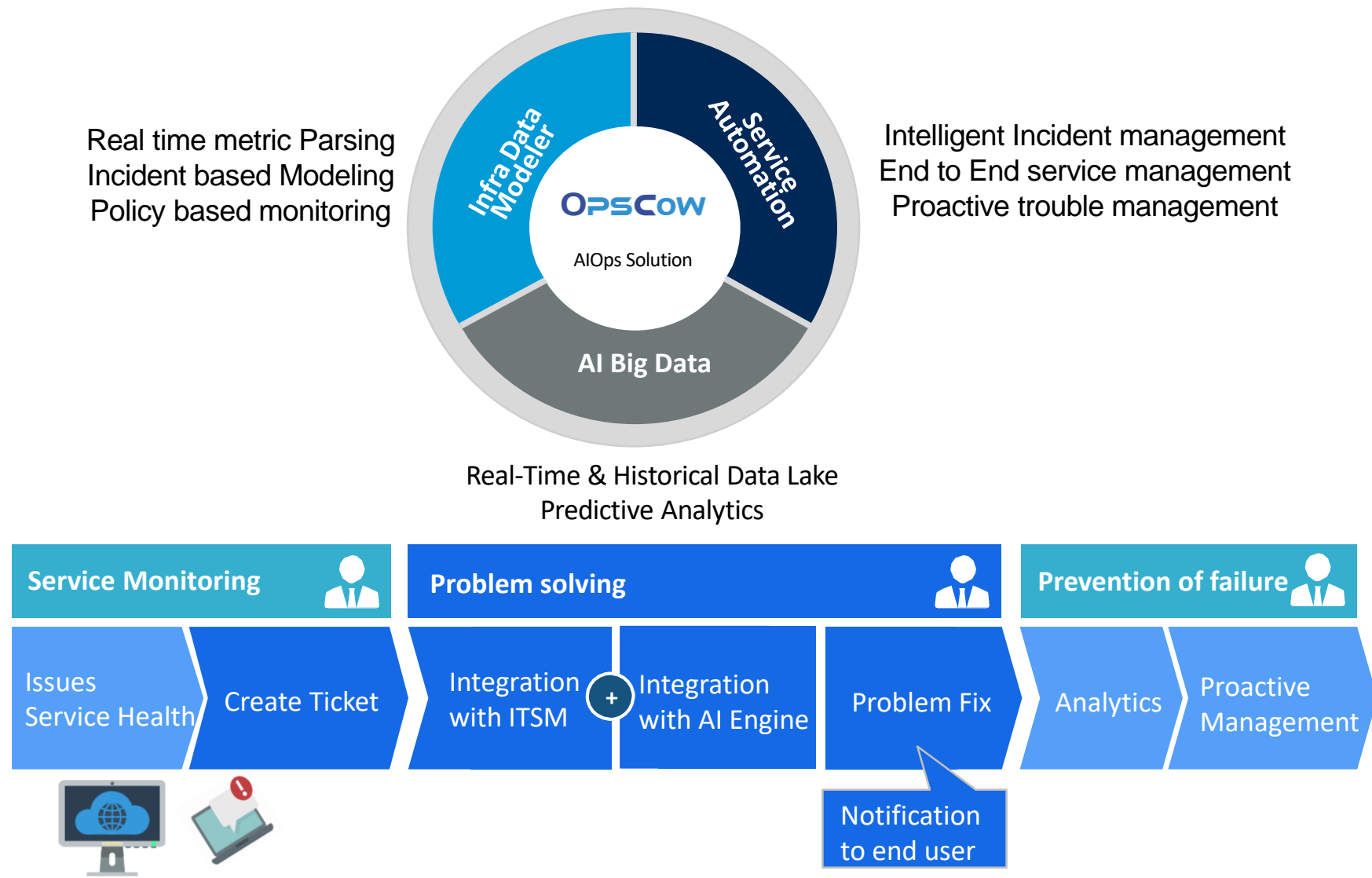


What is OpsCow

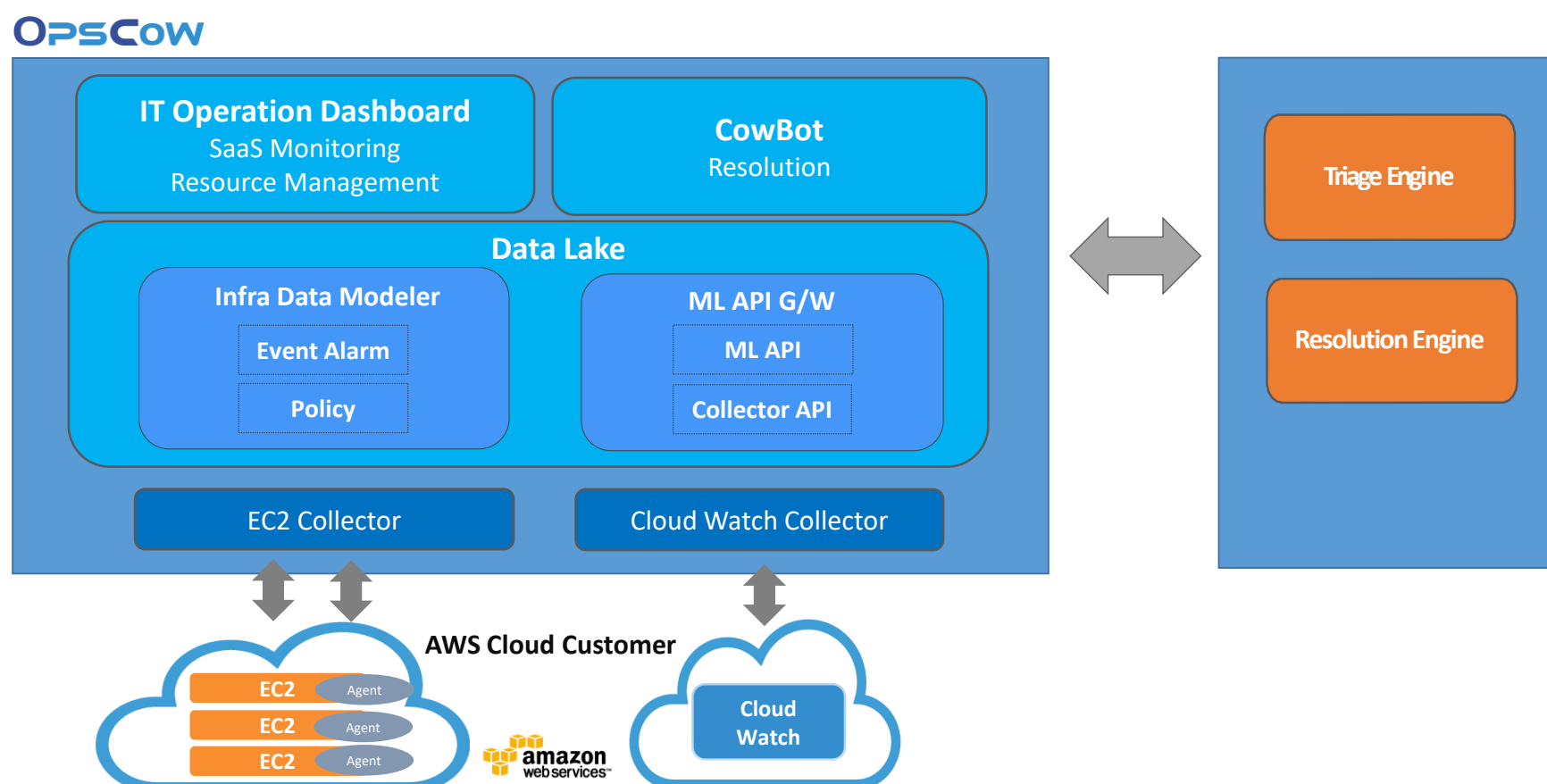
Leveraging artificial intelligence, OpsCow accelerates and automates remediation process by rapidly classifying problems and accurately providing insights to support IT operations better.



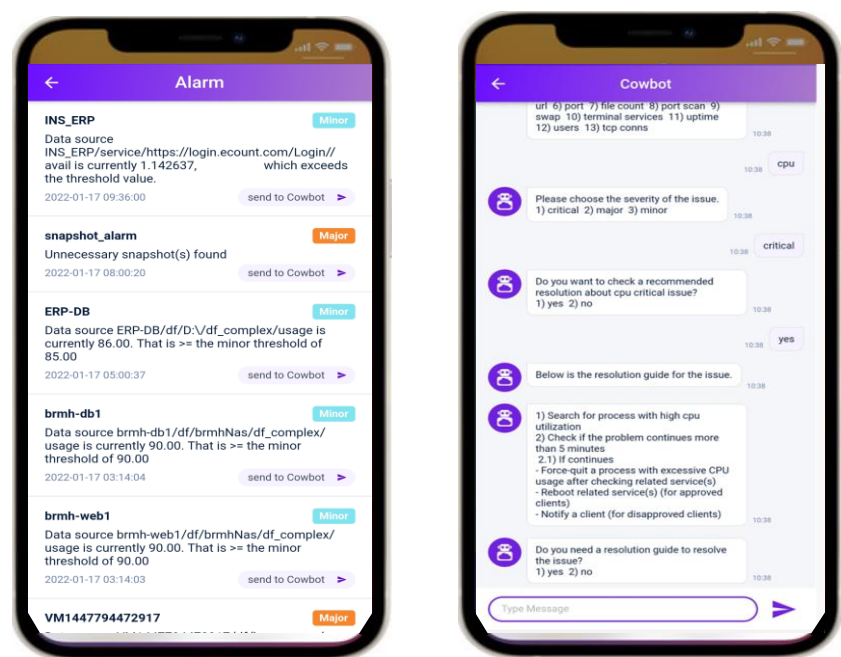
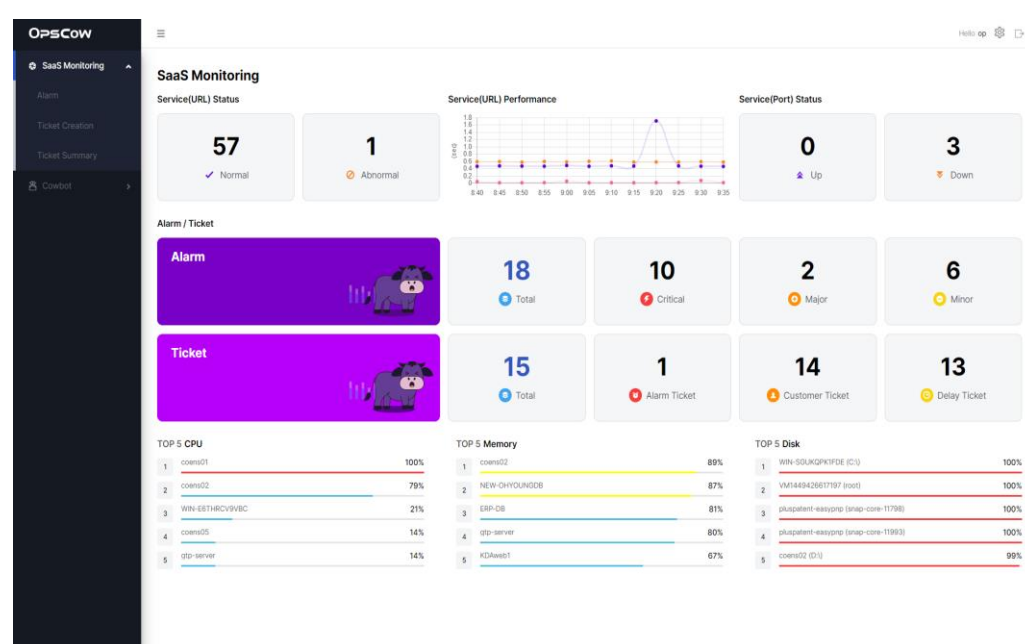
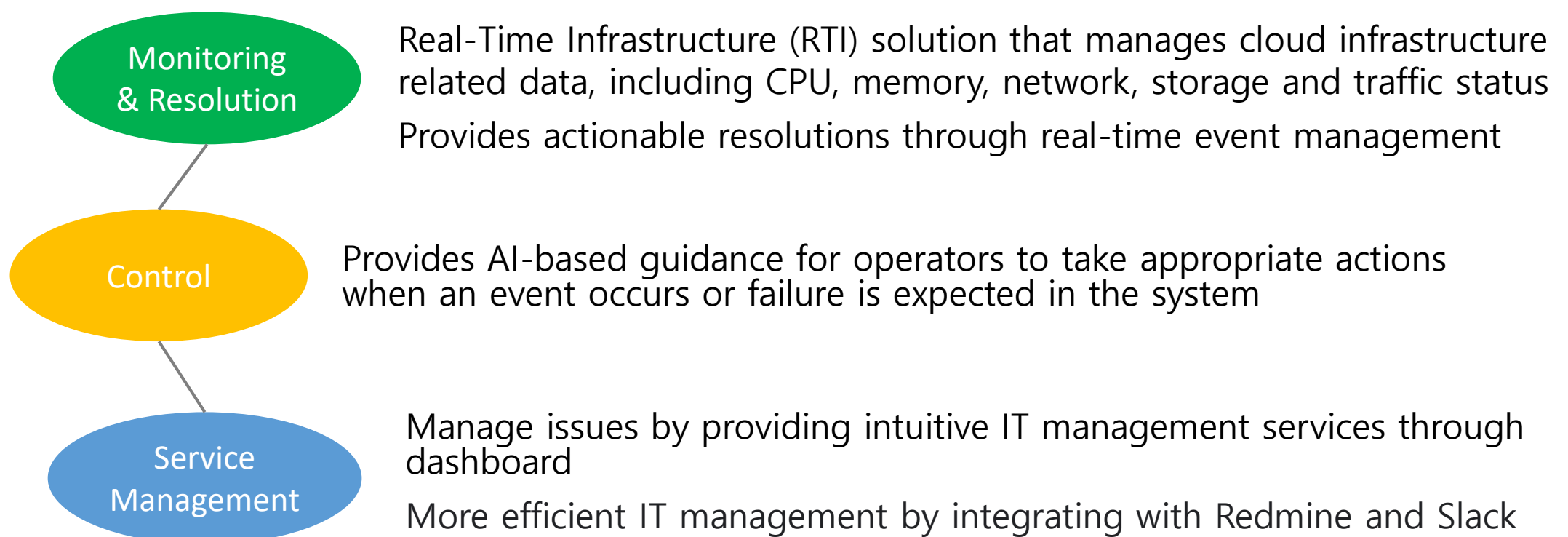
Architecture

OpsCow has the capability to collect metrics data or system performance data and process collected data with Infra Data Modeler to be used by integrated ML engines - triage engine and resolution engine - through ML API G/W.

System performance data and alarms are displayed on dashboard on a real-time basis and resolutions are provided thorough interactive CowBot.



Solution Features



Benefit

- 1 More efficient IT management can be achieved by understanding the needs of system operator better and providing necessary information.
Reduces ticket processing time by learning recurring patterns from past issues.
- 2 By eliminating IT operational noise and correlating operational data from multiple events that have occurred, it identifies the root cause and presents solutions quickly and accurately.
This helps organizations set and achieve MTTR goals.
- 3 Machine learning, based on data acquired during operations, can promptly categorize incidents and present solutions to them, allowing them to quickly resolve problems.
It can also provide predictive alerts that let IT operators address potential problems Before they lead to slow-downs or outages.
- 4 Easily integrate with other IT service management tools and chain them together for full visibility and improved operational efficiency.